

YSN SCAN BCM10

Barin Veterinary Ultrasound Device is for heavy and light livestock to examine and view images of internal organs and tendons in cattle and horses, goats and sheep



Pendant straps

Glasses

Using glasses, you can see the image with

Battery charging adapter

Available and convenient key-

6-inch screen

Linear probe
Size 10 cm

High quality image <

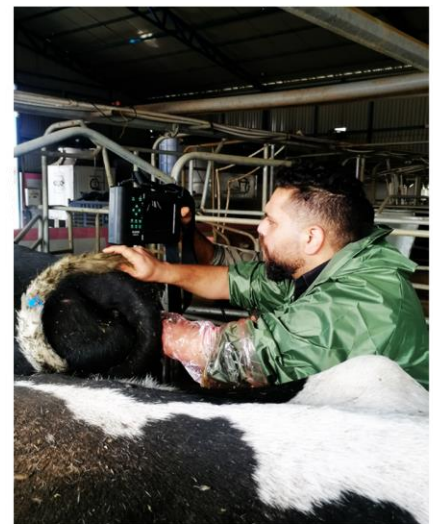
Ability to estimate fetal age <

Ability to connect to camera glasses <

Supports Liner, Canox, Rectal Canox probes <

Interchangeable battery with 5 hours of continuous operation <

Design, production and after-sales service by Yekta Sanat Naji Company <



Barin-Scan

BCM 10 Ultrasound Scanner

- Equipped with technology (Motion mode) to monitor fetal heart rate Using electronic equipment and Fan Less processors in accordance with the latest technology
- Support for Convex and Linear probes with a frequency of 2.5-7.5 MHz
- Has a built-in rechargeable battery with a working time of more than 5 hours
- Support for all types of memory cards and flash memory, to store videos and photos
- Has software for measuring body score and the amount of fat under the skin to manage and ration livestock feed



WIFI, 2×USB, S-Video, VGA	Connection Port	1.1Kg	Weight
2.5-7MH2	Frequency	16cm*25cm*4cm	Dimensions
Video glass ,bag , wireless lcd 7 “,charger	Accessories	curve,linear,convex	Support probe
800×480 pixels	lution Display reso	year 1	Warranty
6000mAH,Contiuous scan greater than 4hours	Battery life	ed USB/SD support	Image export

